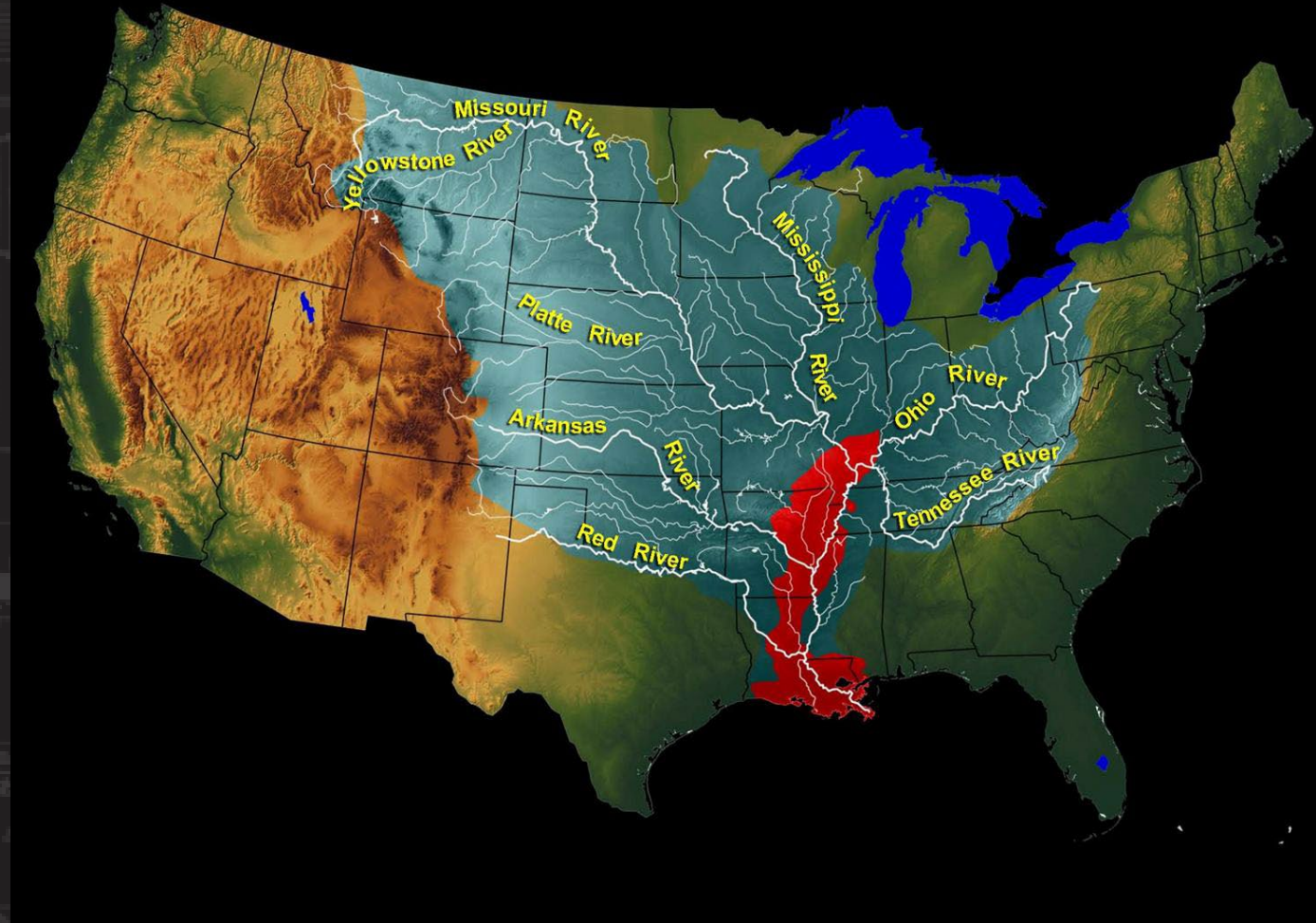


NATIONAL WATERWAYS CONFERENCE

**Major General Kimberly Peeples
Commander
Mississippi Valley Division
President
Mississippi River Commission**

**September 18th, 2024
New Orleans, LA**



U.S. ARMY



**US Army Corps
of Engineers®**





U.S. ARMY

USACE Civil Works Mission



Civil Works Directorate
(HQ USACE / Washington, DC)

8
Civil Works Divisions
(minus Transatlantic Division)

1
Civil Works ONLY Division
(Mississippi Valley Division)

37
Civil Works Districts

18
Civil Works ONLY Districts

Watersheds
define Civil Works Boundaries

1824
1st USACE Civil Works mission
to "clear obstacles on Ohio and
Mississippi Rivers and at ports."



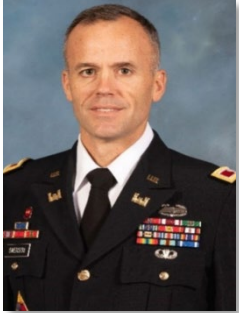


Mississippi Valley Division and Mississippi River Commission



U.S. ARMY

ST. PAUL
COL Eric Swenson



ROCK ISLAND
COL Aaron Williams

MG Kimberly Peeples
Commanding General- **MVD**
President- **MRC**



Hon. James Reeder
Civilian
2018



Hon. Riley James
Civilian
2020

ST. LOUIS
COL Andy Pannier



MEMPHIS
COL Brian Sawser

Hon. Robert Miller, Ph. D.
Civilian
2022



Rear Adm Ben Evans
NOAA

VICKSBURG
COL Jeremiah Gipson



NEW ORLEANS
COL Cullen Jones

Deputy Commander,
Secretary,

MG Mark C. Quander,
LRD



BG William Hannan
NWD

MVD
Dr. Elizabeth Fleming
Director of Regional
Business



MVD
Mr. Jim Bodron
Director of
Programs



MRC
Mr. Charles Camillo
Executive Director

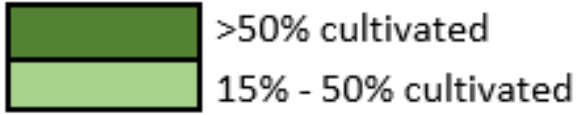


U.S. ARMY

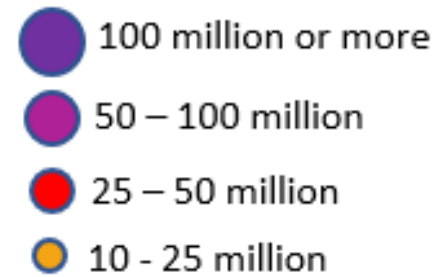
Our Geographical Advantage



Prime Agricultural Lands



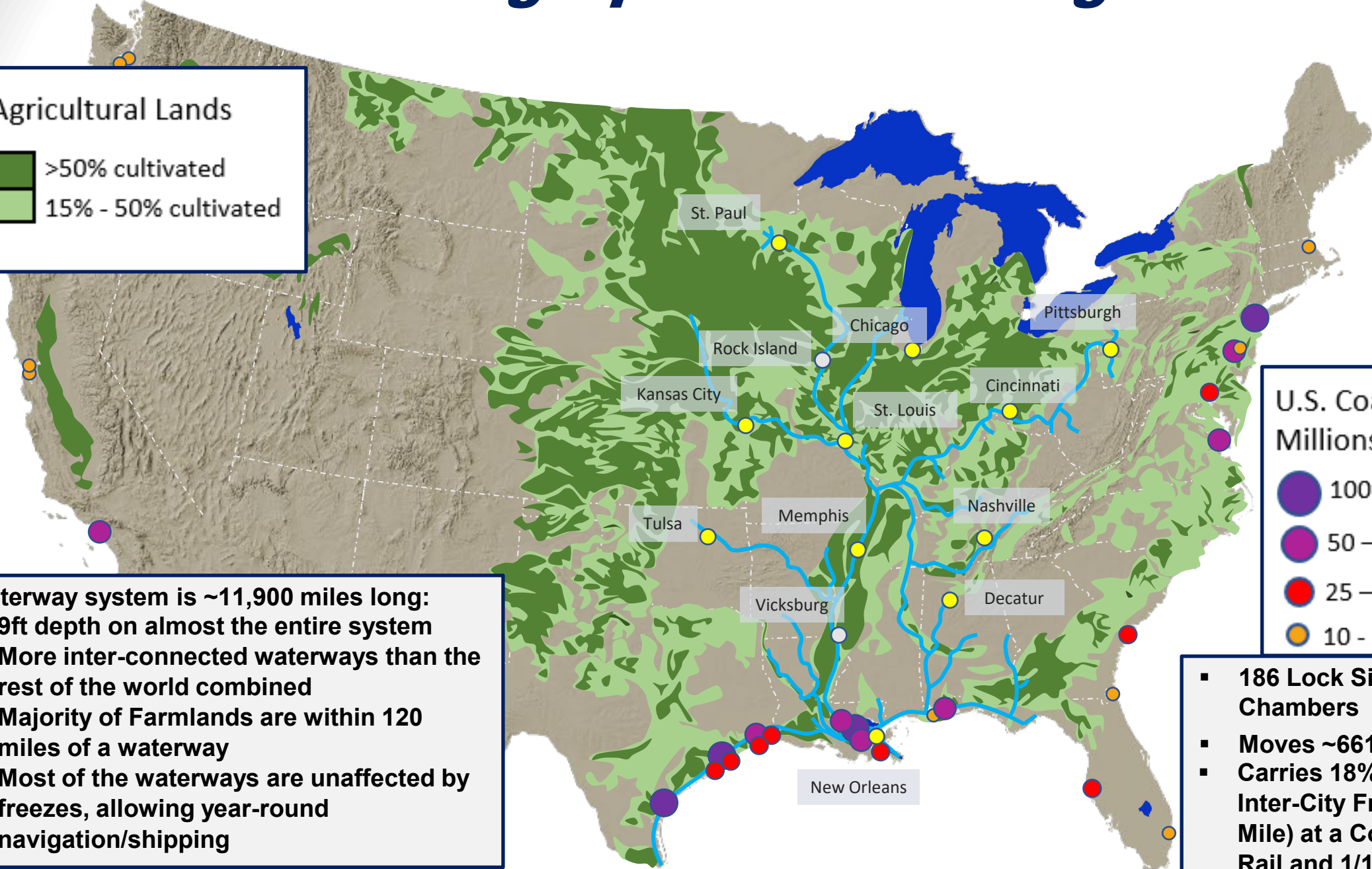
U.S. Coastal Ports Millions of Tons



Inland waterway system is ~11,900 miles long:

- 9ft depth on almost the entire system
- More inter-connected waterways than the rest of the world combined
- Majority of Farmlands are within 120 miles of a waterway
- Most of the waterways are unaffected by freezes, allowing year-round navigation/shipping

- 186 Lock Sites with 228 Chambers
- Moves ~661k tons/year
- Carries 18% of Nation's Inter-City Freight (by Ton-Mile) at a Cost 2/3 That of Rail and 1/10 of Truck





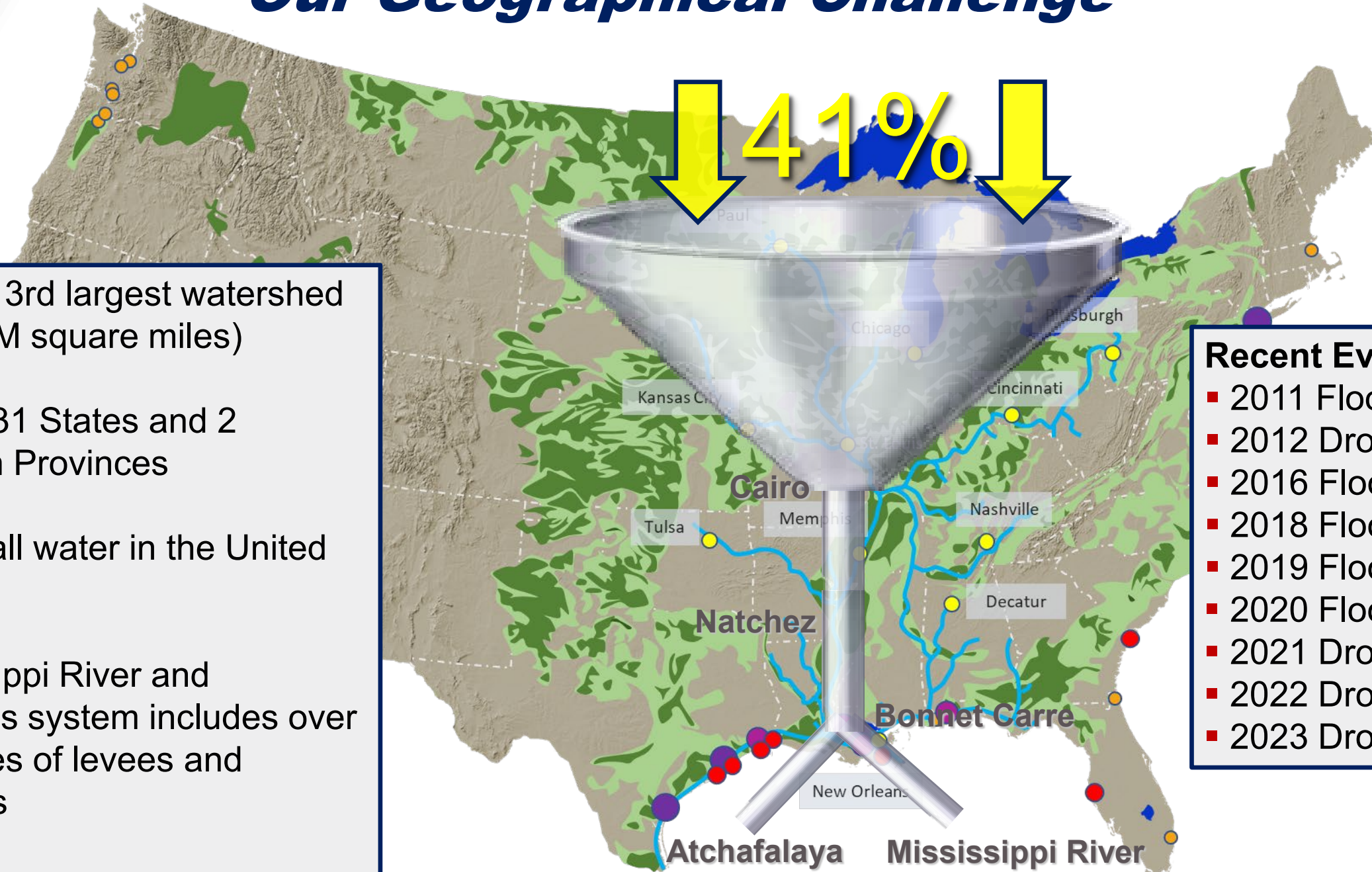
U.S. ARMY

Our Geographical Challenge



- World's 3rd largest watershed (over 1.4M square miles)
- Drains 31 States and 2 Canadian Provinces
- 41% of all water in the United States
- Mississippi River and Tributaries system includes over 2100 miles of levees and floodwalls

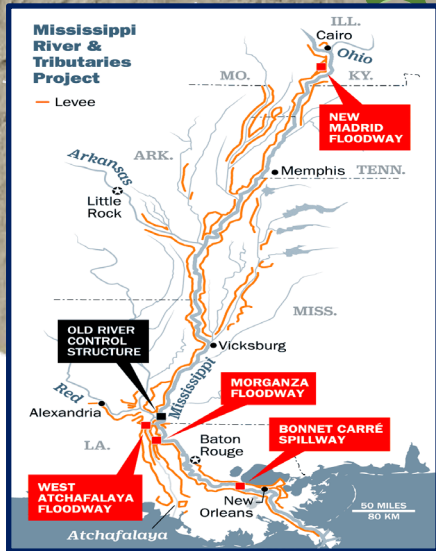
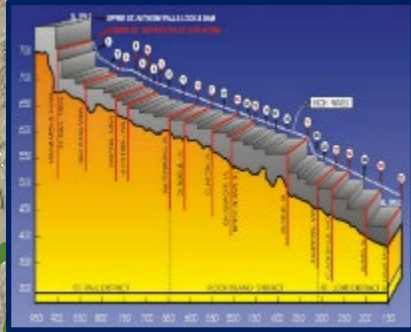
- Recent Events:**
- 2011 Flood
 - 2012 Drought
 - 2016 Flood
 - 2018 Flood
 - 2019 Flood
 - 2020 Flood
 - 2021 Drought
 - 2022 Drought
 - 2023 Drought





U.S. ARMY

Accelerating the Advantage



LOWER MISSISSIPPI RIVER COMPREHENSIVE MANAGEMENT STUDY



U.S. ARMY

Assistant Secretary of the Army (Civil Works) - Priorities



Upgrade the Nation's waterways and ports to strengthen supply chains and economic growth



Build innovative, climate-resilient infrastructure to protect communities and ecosystems



Modernize civil works programs to better serve the needs of disadvantaged communities



Invest in science, research and development to deliver enduring water-resource solutions



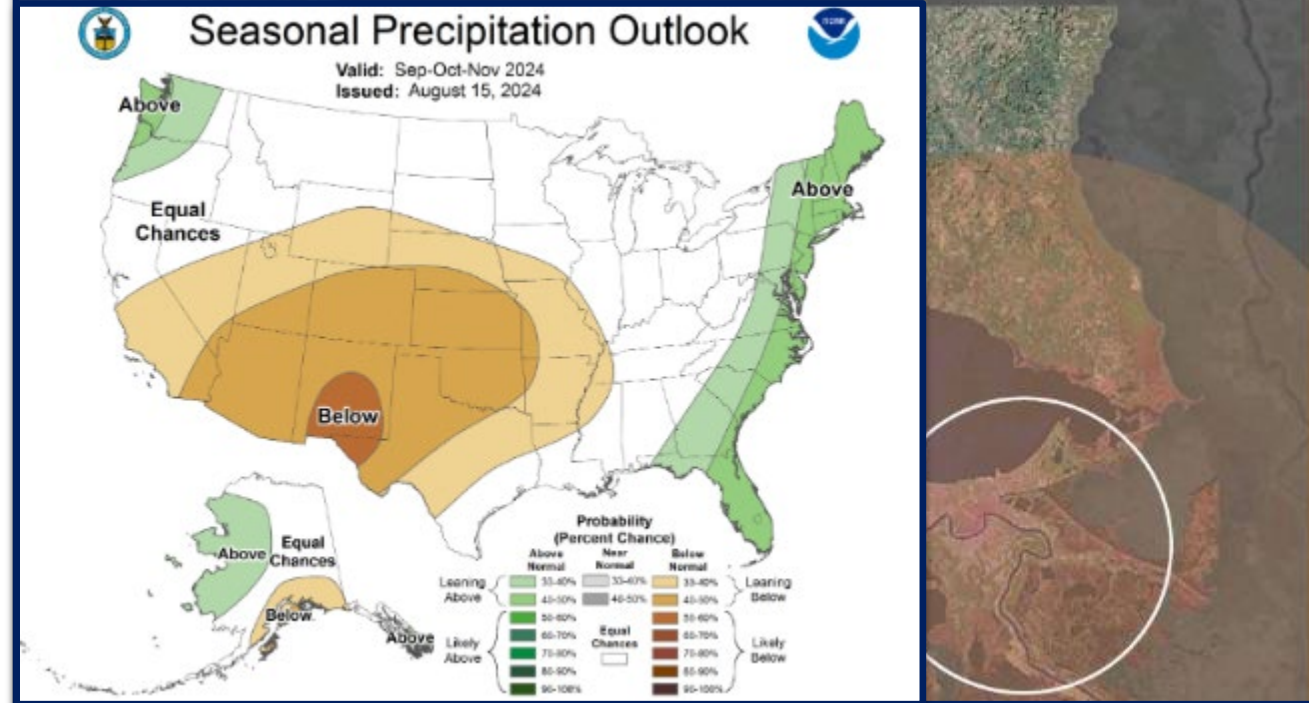
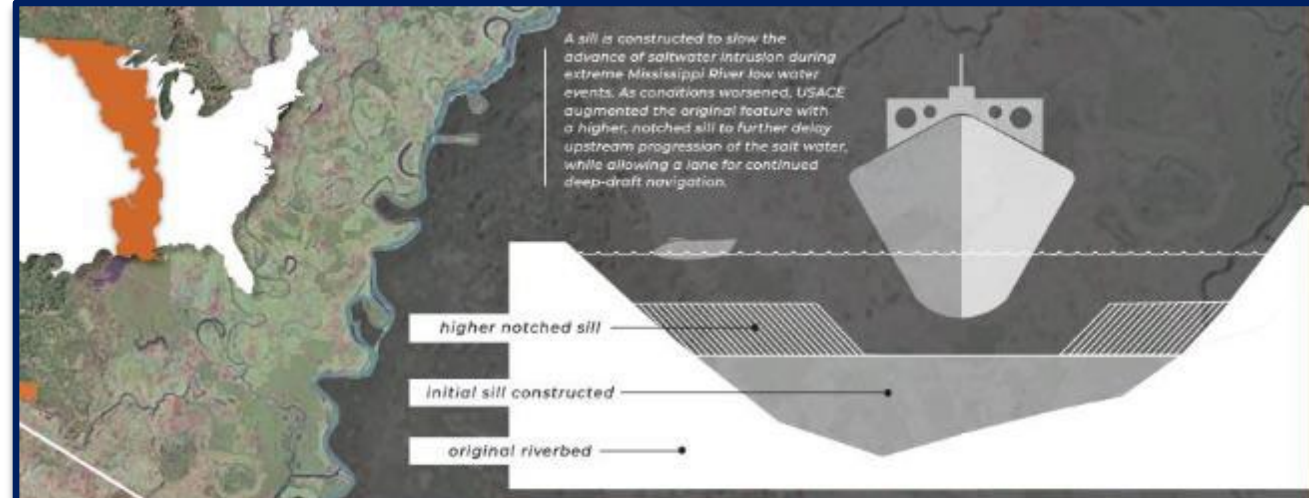
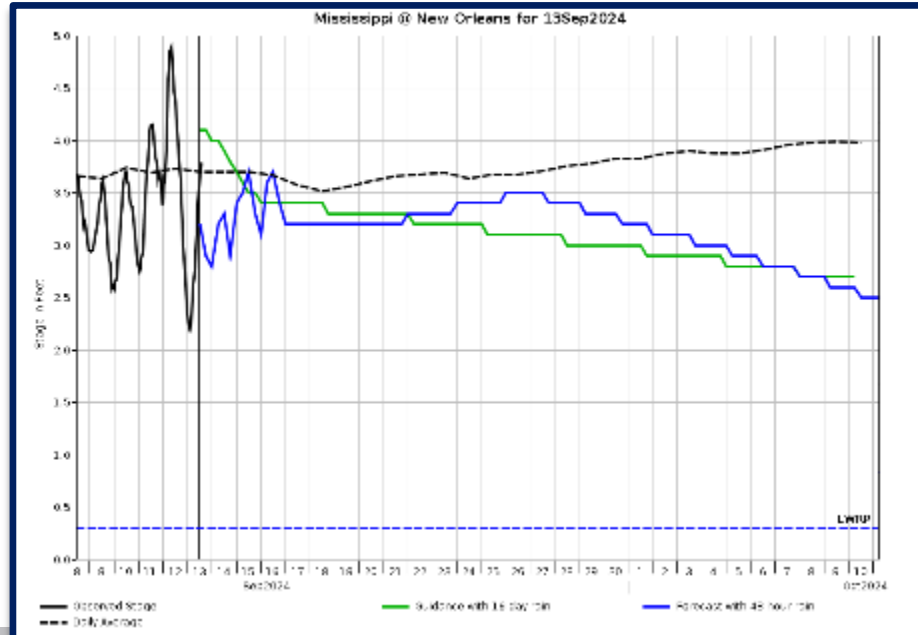
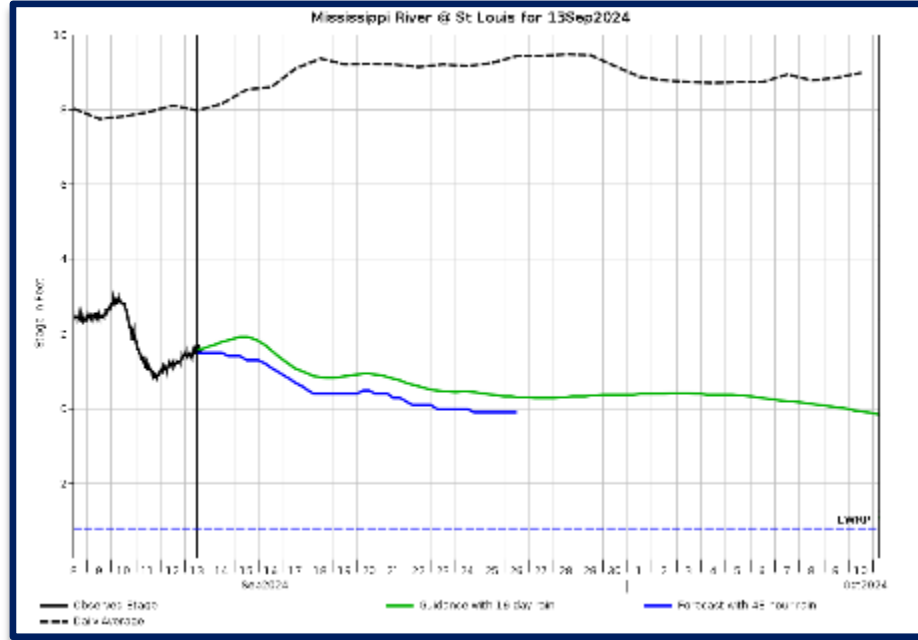
Strengthen communications and relationships to solve water resource challenges





U.S. ARMY

Low Water 2024 - Update





Thank You!

