

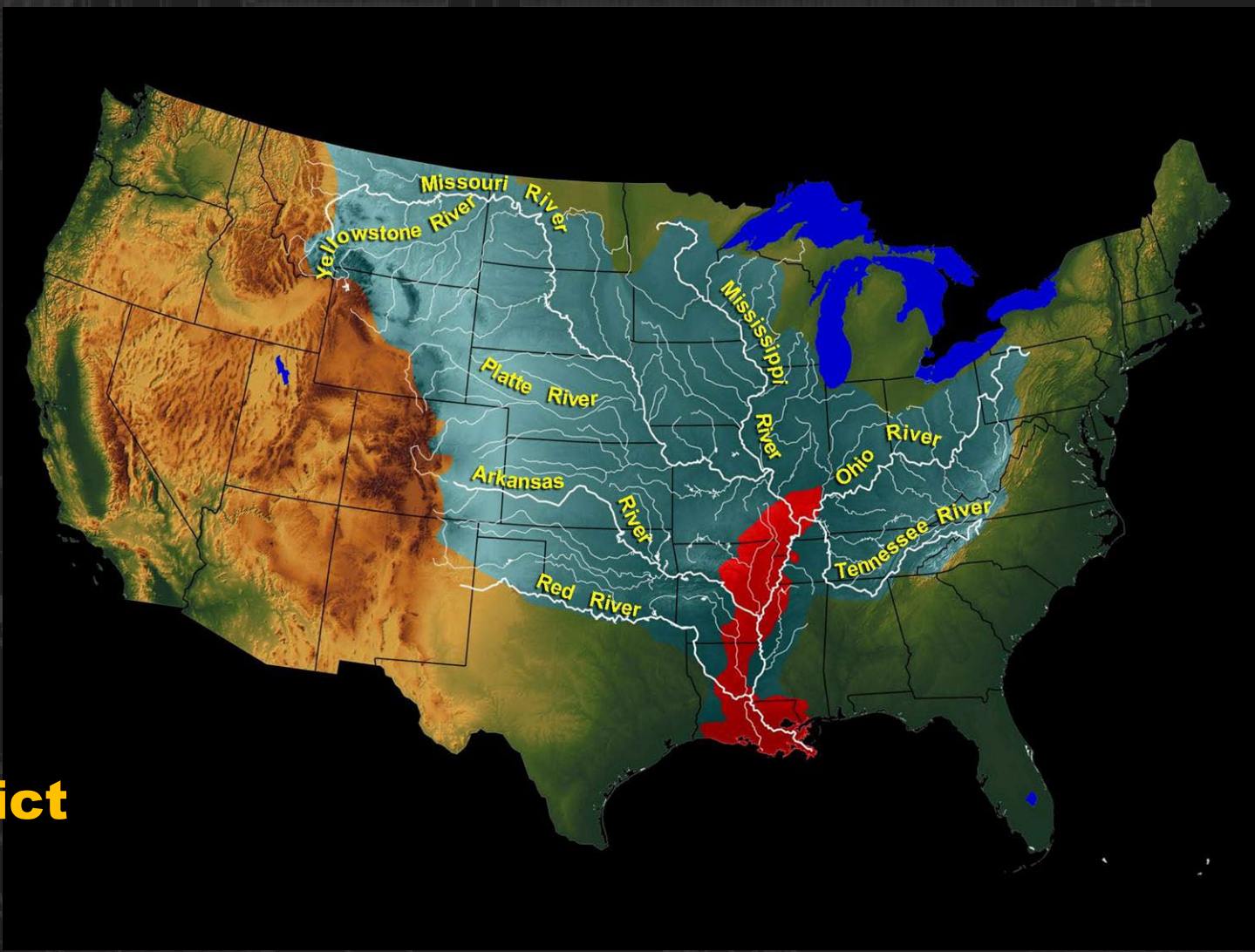
# NATIONAL WATERWAYS CONFERENCE

**Col. Andy Pannier**  
**Commander, St. Louis District**

**Col. Brian Sawser**  
**Commander, Memphis District**

**Col. Cullen Jones**  
**Commander, New Orleans District**

**September 18<sup>th</sup>, 2024**  
**New Orleans, LA**



U.S. ARMY



US Army Corps  
of Engineers®





# ST. LOUIS DISTRICT

US Army Corps of Engineers®

U.S. ARMY



## OVERVIEW

- 416 Miles of Navigable Waterways along the Mississippi, Illinois and Kaskaskia Rivers
- 2 States, 8 Congressional Districts, 4 Senators
- 12 Port Authorities, 5 Lock & Dams, 100M tons of commodities transported annually
- Maintain Shallow Draft Navigation Channel - 300 ft Width and 9 ft Depth Dredge Pot
- 95 Levee Segments, 750 Levee Miles, protecting 575K acres of economic/agricultural interest

## PARTNERING

- Bi-Annual Lower Kaskaskia Partnership Barge Trip
- Annual River Resource Action Team (RRAT) Trip

## CHALLENGES

- Aging Infrastructure, Deferred Maintenance, & Recapitalization (Dredge Potter)
- Consistent Funding for Regulating Works
- Increasing costs impacting efficient funding for LD25 and future NESP-Navigation Projects





# MEMPHIS DISTRICT

US Army Corps of Engineers®

## OVERVIEW

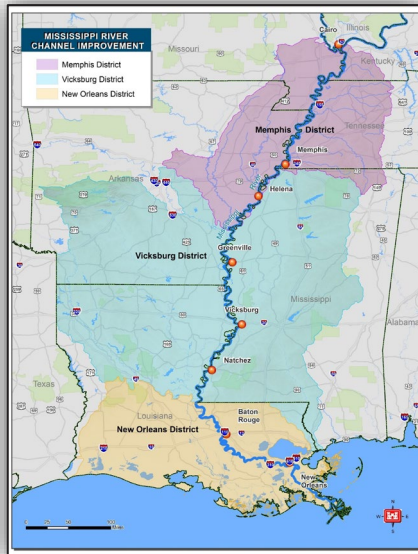
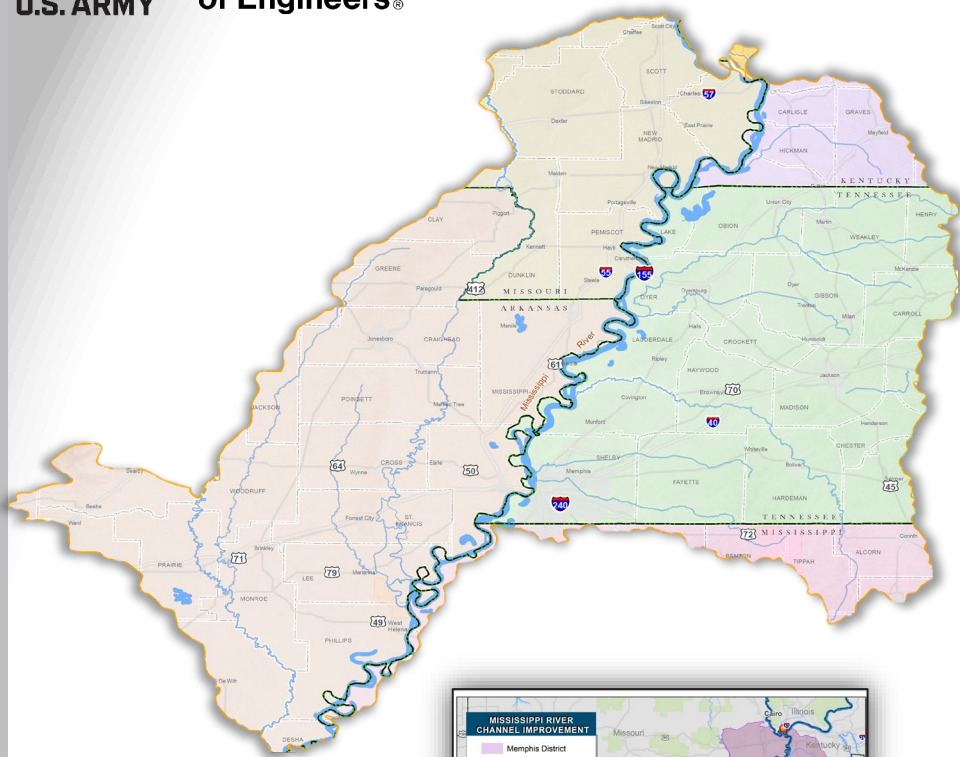
- 355 Miles of the Lower MS River from Cairo, IL to mouth of White River
- 10 Inland Harbors, 6 States, 8 Congressional Districts, 12 Senators
- Maintain Shallow Draft Navigation Channel - 300 ft Width and 9 ft Depth
- Ensley Engineer Yard – Marine Maintenance Facility
- Dredge Hurley and Motor Vessel Mississippi
- Regional Channel Improvement Lead – Manage CI Program for Entire Lower MS River

## PARTNERING

- Towing Industry – Annual Pilot’s Day and Weekly Calls
- Environmental Agencies – Annual Environmental Day

## CHALLENGES

- Recapitalization (Dredges/ Revetment Plant)
- MR&T Funding vs Rising Prices of Labor/Plant
- Transition to Revetment of the Future - BGU, Armor 1, Automated Mat



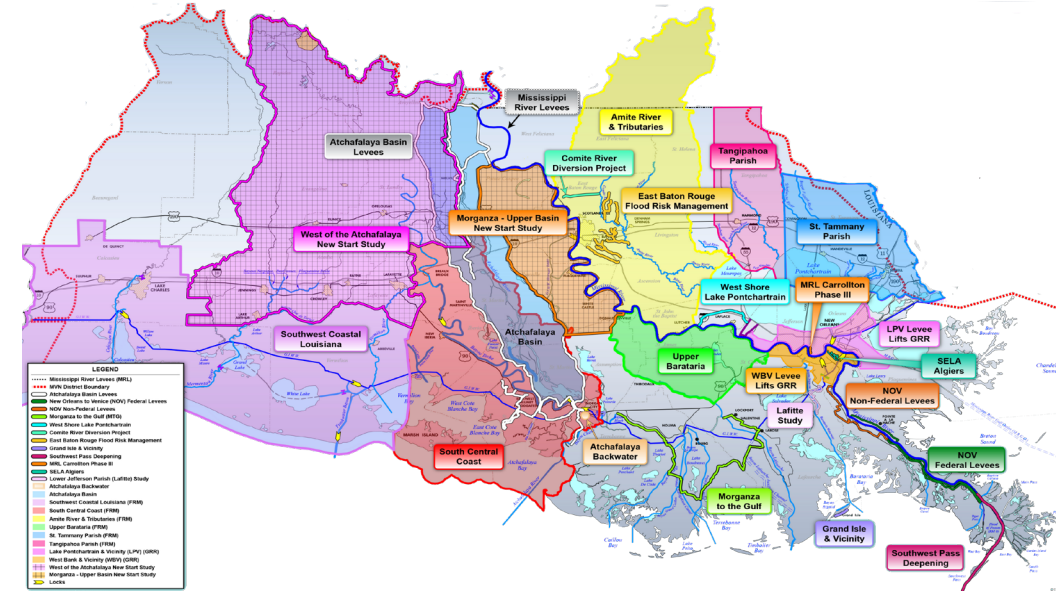


# NEW ORLEANS DISTRICT

US Army Corps of Engineers®

## OVERVIEW

- 2,800 miles of navigable waterways
- Largest dredging program in US
  - Mississippi River Ship Channel
  - Gulf Intracoastal Waterway
  - Calcasieu River and Pass
  - Lower Atchafalaya River
- 18 locks and control structures
- 5 of the nation's 15 busiest ports
- Large Beneficial Use of Dredge Material Program
- Dredge Wheeler



## ON-GOING/FUTURE EFFORTS

- Mississippi River Deepening to 50'
- Lower Mississippi River Comp Study Lead
- IHNC & Bayou Sorrel Lock Replacement Studies
- Port Fourchon & Houma Navigation Canal Deepening Studies
- Port of New Orleans Deepening

## PARTNERING

- Quarterly Hopper Dredge Industry Forum
- Annual Cutterhead Dredge Industry Forum
- Gulf Intracoastal Canal Association
- Atchafalaya Intracoastal Association
- Port Authorities

## CHALLENGES

- Mississippi River Low Water/Saltwater Intrusion
- Utility (Pipeline) Relocations



LOWER MISSISSIPPI RIVER COMPREHENSIVE MANAGEMENT STUDY