

Maximizing Collaboration Through Watershed Connect

October 4, 2023



A REGIONAL WATER AGENCY
SINCE 1954

Kelly Malloy, MBA
Strategic Communications Manager

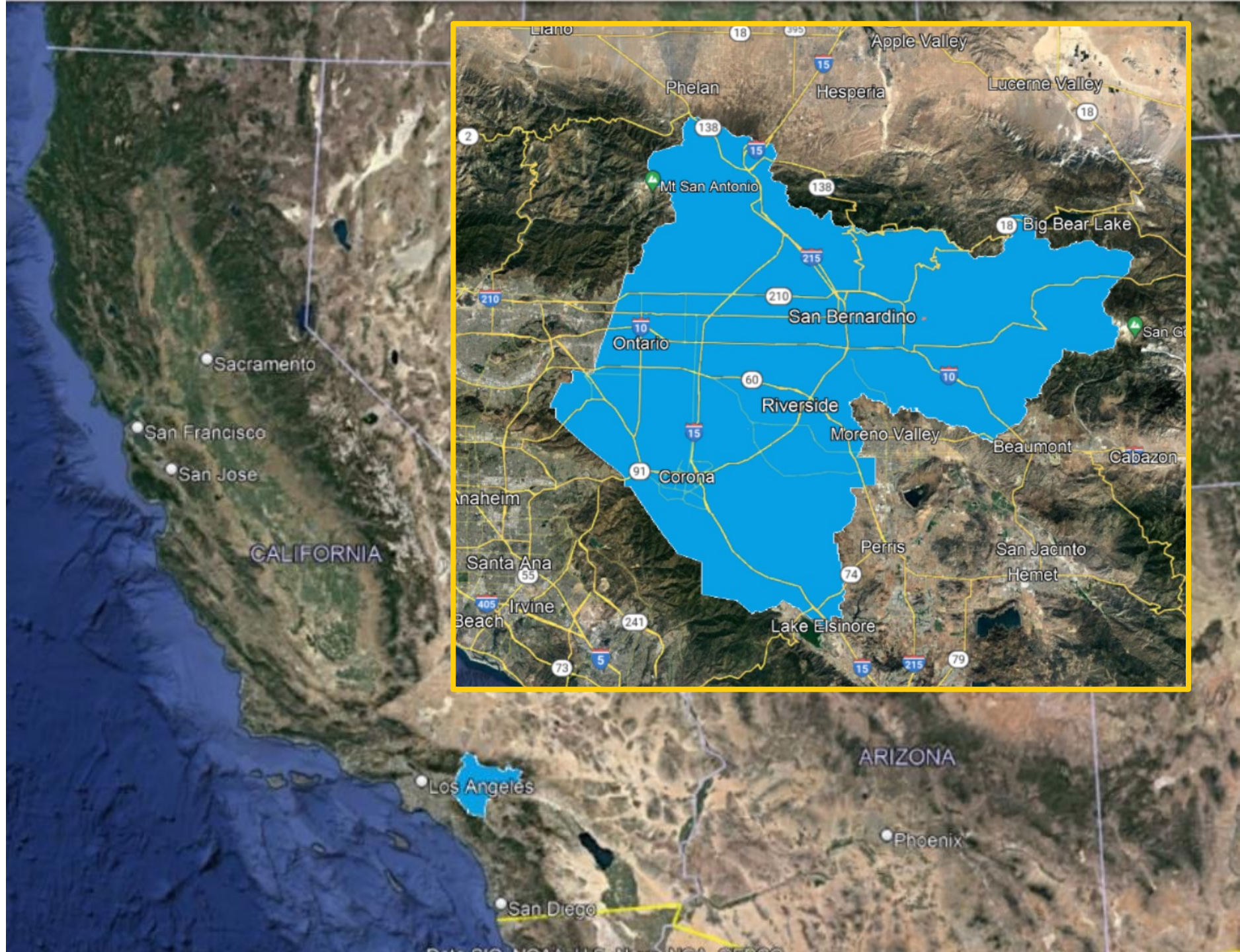
Who is San Bernardino Valley?

- Water wholesaler and State Water Contractor
- Formed in 1954 with a 5-Member elected Board
- Provide supplemental water needs to our service area
- 325 square mile service area, 700,000 people, 15 retail agencies



Santa Ana River Watershed

Largest coastal stream system in Southern California

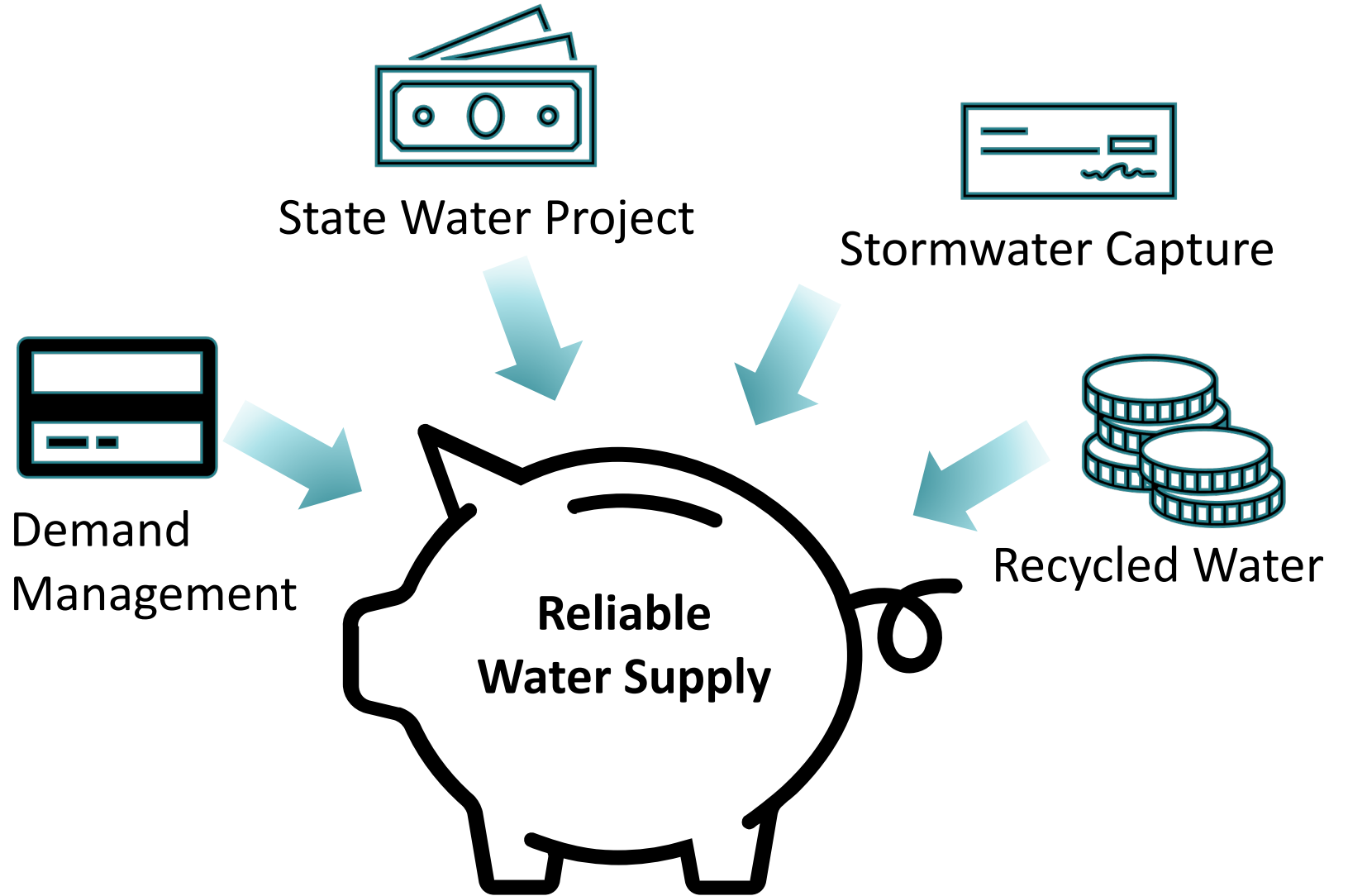


You don't plan for drought during the drought...

- Plan today for future droughts
- Diverse water supply portfolio
- Maximize value of atmospheric rivers
- Storage is our savings account
- Water Use Efficiency stretches the savings account
- Regional collaboration is necessary



DIVERSITY = RESILIENCE



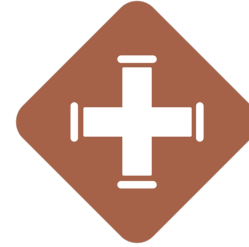
Collaboration for Resilience



- Accept reality and plan accordingly
 - People need water, and so does the environment
- Inter-agency collaboration is a necessity
 - Understand others needs and interests; find common ground
- Failure is not an option
 - The cost of doing nothing is too great
- Plan and act for the long-term

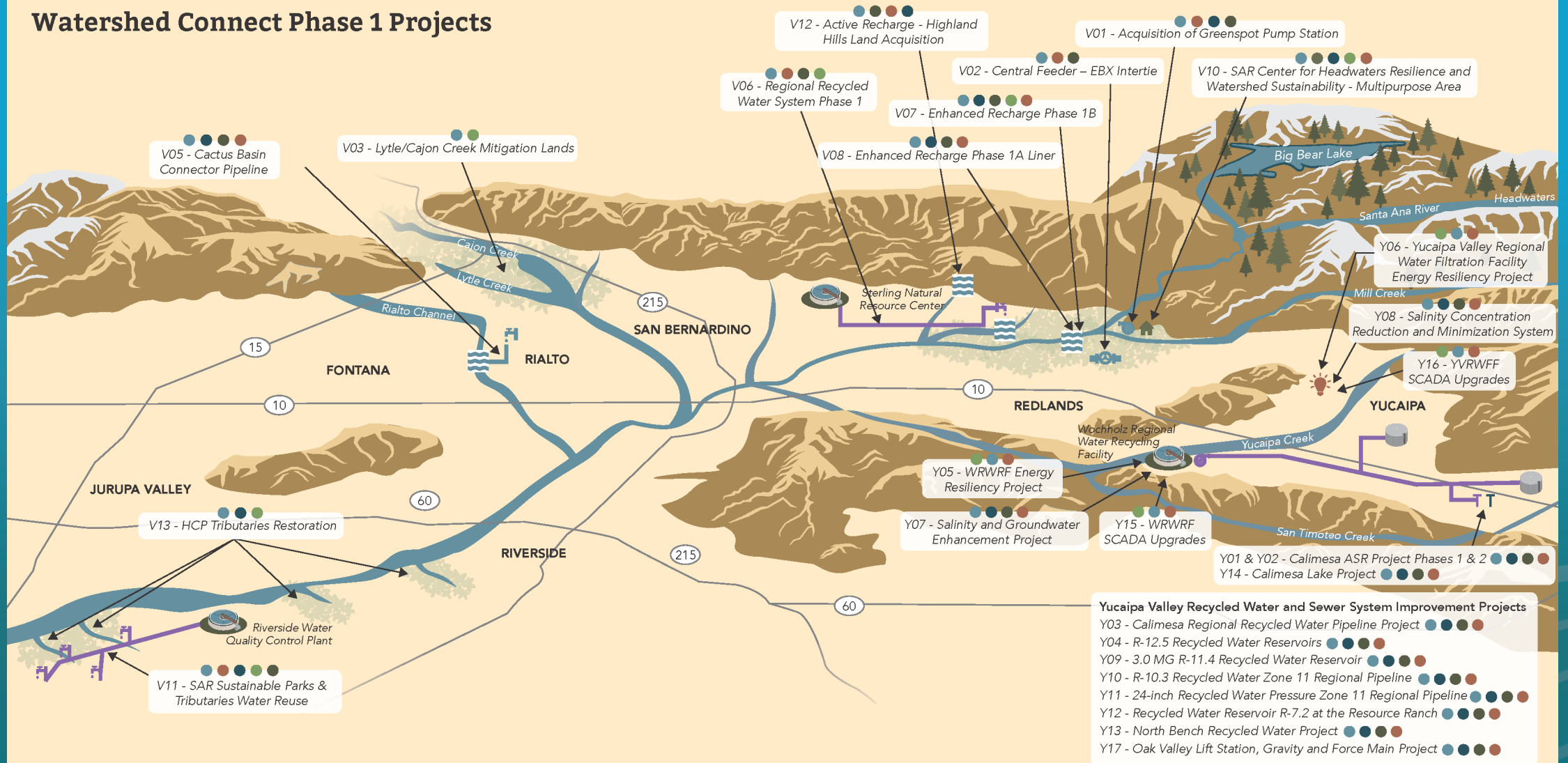
Watershed Connect:

Achieving resilience through integrated infrastructure



- Interconnected and integrated funding opportunity
- A long-term funding tool for water infrastructure
 - ~\$600M worth of water infrastructure over decades
- Maximize value, offer synergistic benefits
- Low-cost financing for water supply and energy projects

Watershed Connect Phase 1 Projects



- Yucaipa Valley Recycled Water and Sewer System Improvement Projects**
- Y03 - Calimesa Regional Recycled Water Pipeline Project
 - Y04 - R-12.5 Recycled Water Reservoirs
 - Y09 - 3.0 MG R-11.4 Recycled Water Reservoir
 - Y10 - R-10.3 Recycled Water Zone 11 Regional Pipeline
 - Y11 - 24-inch Recycled Water Pressure Zone 11 Regional Pipeline
 - Y12 - Recycled Water Reservoir R-7.2 at the Resource Ranch
 - Y13 - North Bench Recycled Water Project
 - Y17 - Oak Valley Lift Station, Gravity and Force Main Project



LEGEND

Wastewater Treatment Plant	Natural Waterway or Channel	Groundwater Recharge Basin	Habitat Restoration Area
Recycled Water Turnout	Recycled Water Pipeline	Recycled Water Pump Station	Recycled Water Reservoir
State Water Project Turnout	Raw Water Pipeline	Raw Water Pump Station	Injection and Extraction Well

PROGRAM BENEFITS

Resilience in the Face of Climate Change	Infrastructure Enhancements	Drought Resiliency
Improved Water Quality	Ecological Health	



A REGIONAL WATER AGENCY
SINCE 1954

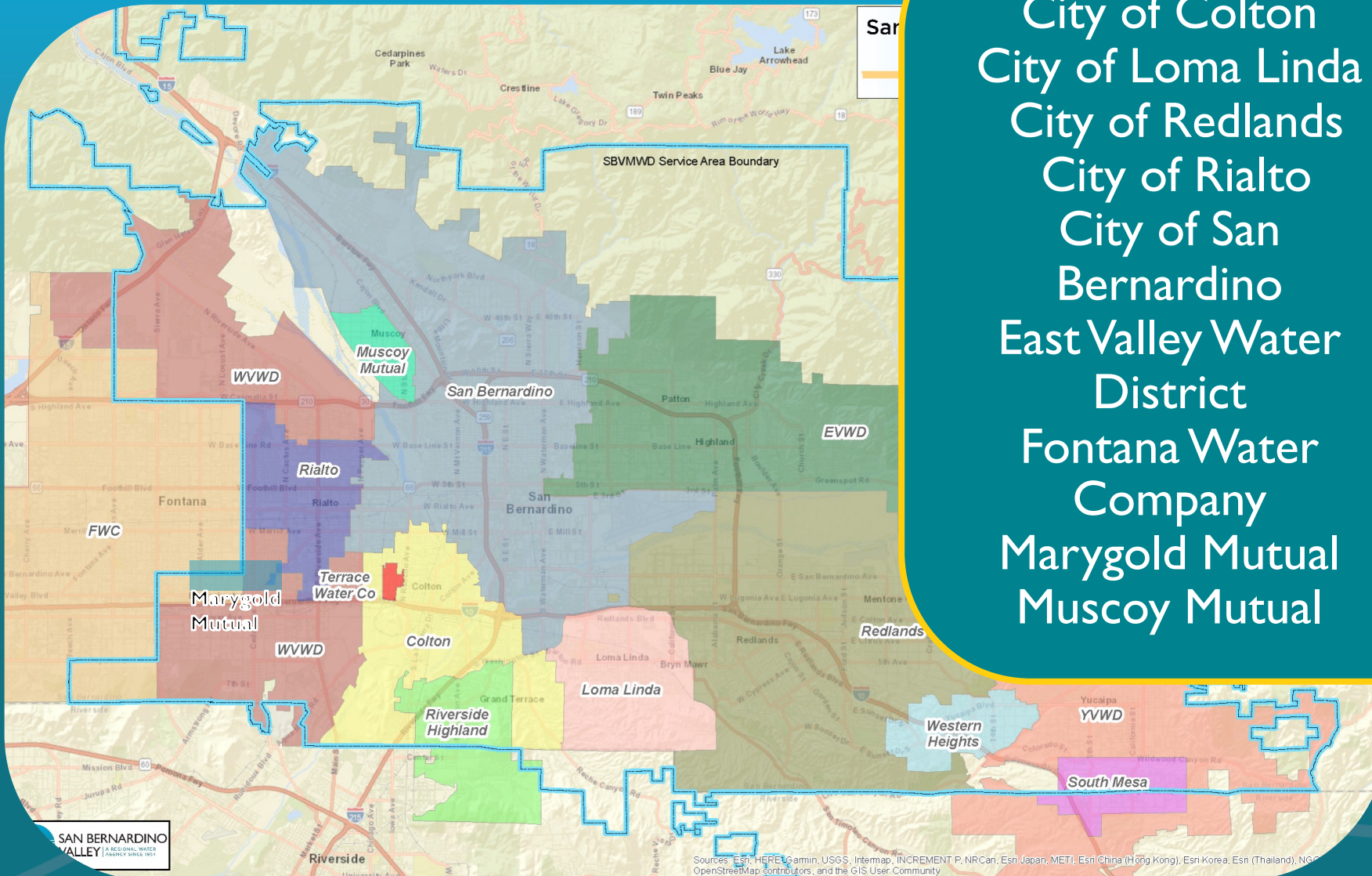


Stormwater Capture: Enhanced Recharge Project – 1B



A REGIONAL WATER AGENCY
SINCE 1954

Retail Water Agencies



City of Colton
 City of Loma Linda
 City of Redlands
 City of Rialto
 City of San Bernardino
 East Valley Water District
 Fontana Water Company
 Marygold Mutual
 Muscoy Mutual

Riverside Highland Water District
 South Mesa Water District
 Terrace Water Company
 Yucaipa Valley Water District
 Western Heights Water District
 West Valley Water District



The Big Picture: Regional Collaborations

- Enhanced Stormwater Capture/Recharge Project
- Cooperative Groundwater Recharge (Groundwater Council)
- Hydroelectric Facilities
- Local Resources Investment Program

Locating Projects with Endangered Species

Plants



- Slender-horned spineflower
- Santa Ana River woolly-star

Fish



- Santa Ana sucker
- Arroyo chub
- Santa Ana speckled dace

Invertebrates



Delhi Sands flower-loving fly

Mammals



- San Bernardino kangaroo rat
- Los Angeles pocket mouse

Birds



- Least Bell's vireo
- Southwestern willow flycatcher
- Yellow-breasted chat
- Western yellow-billed cuckoo
- Tricolored blackbird
- Burrowing owl
- Coastal California gnatcatcher
- Cactus wren

Herpetofauna



- Arroyo toad
- Western spadefoot
- Mountain yellow-legged frog
- Western pond turtle
- South Coast garter snake
- California glossy snake