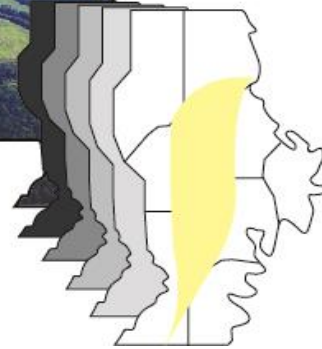




THE LITTLE RIVER DRAINAGE DISTRICT



**FLOOD CONTROL & DRAINAGE
SINCE-1907**

W. Dustin Boatwright, PE

Chief Engineer/Executive Vice President

Regional Engineer

Mississippi Valley Flood Control Association

Before Flood Control, Reliability?



Survey Camps



Survey Crews



Implementing A Plan



Construction



Stump Pulling Equipment



Construction



Electric Dragline on Mats



Floodway Construction



Kirk, MO (East of Kennett)



CANAL CONS. CO. CUTTING THROUGH KIRK

Revetment Willow Matting



Board Mattress Sta. 640 CR. Div. Ch. Placing stone at up stream end. (2)

Revetment Willow Matting Blockhole

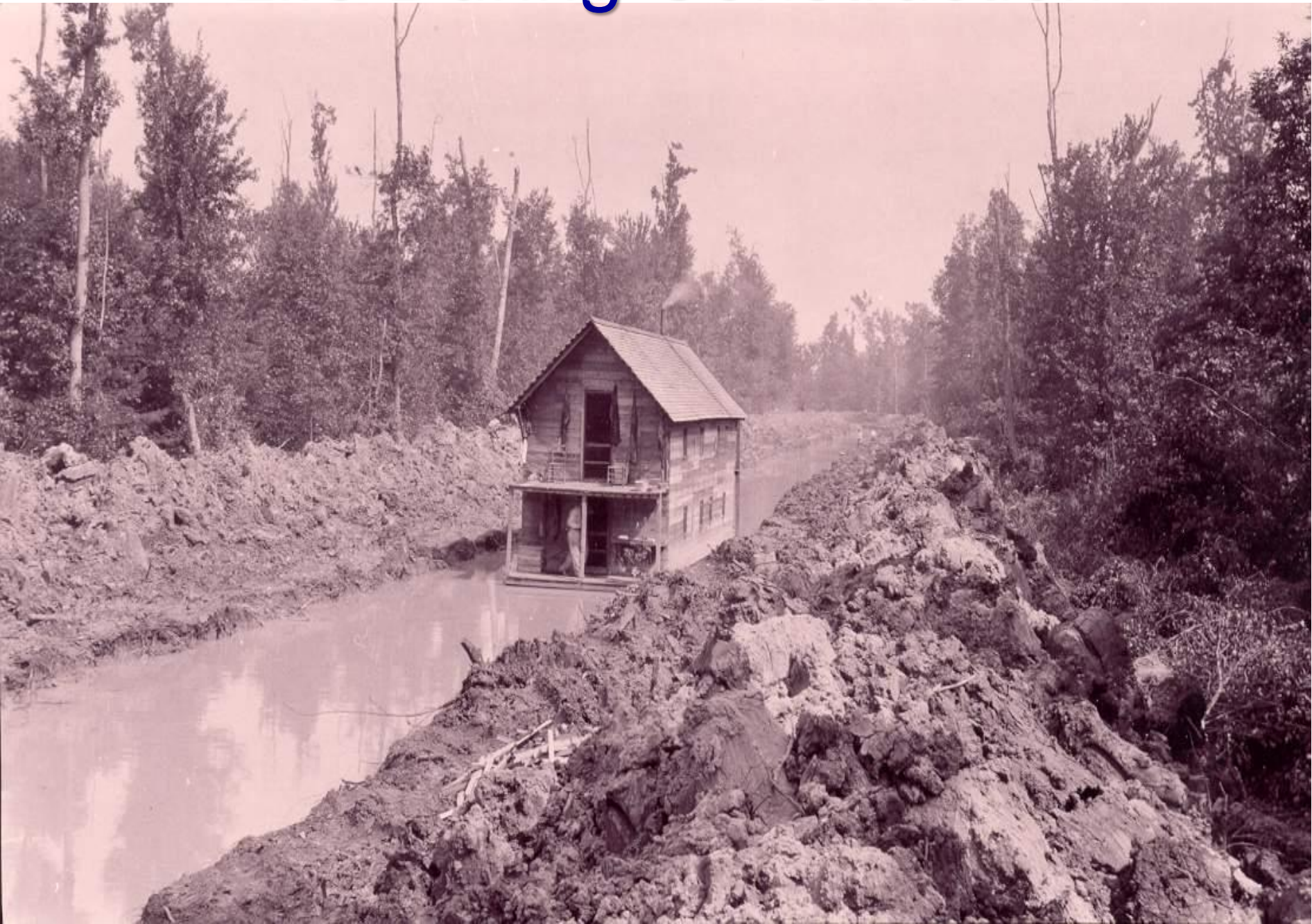


Blockhole Near Delta, MO

Headwater Diversion Channel



Life During Construction



Life During Construction



Cubic Yardage & Cost 1926 Report

➤ Headwater Diversion Channel System

- 10 Million Cubic Yards of Material
- Cost - \$2,730,000

➤ Main Drainage System

- 33.7 Million Cubic Yards of Material
- Cost - \$2,377,000

➤ West Basin Extension

- 1.6 Million Cubic Yards of Material
- Cost - \$202,000

➤ Equalizing Plan

- 20.7 Million Cubic Yards of Material
- Cost - \$4,000,000

➤ Total Cost Project

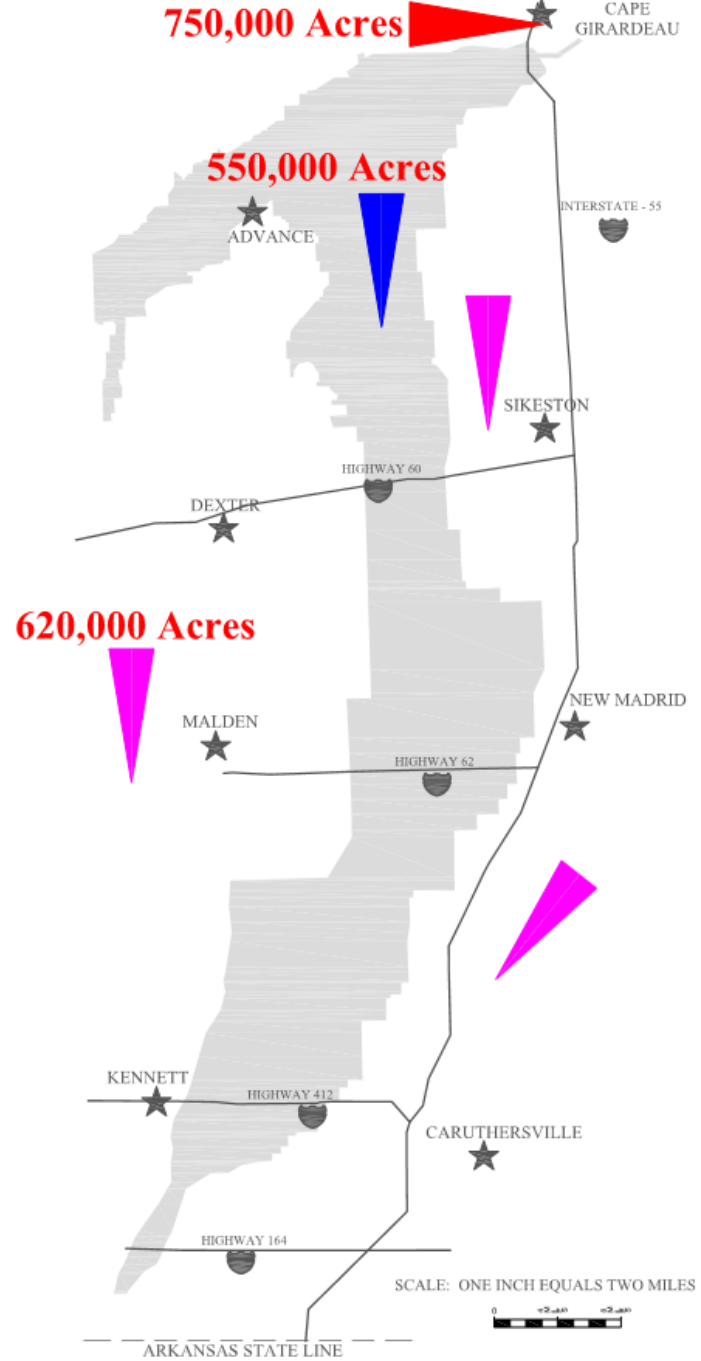
- 66 Million Cubic Yards of Material
- Cost - \$9,309,000

**Construction
Timeframe
1914-1928**



Area
Diverted
into
Mississippi
River
750,000
Acres

THE LITTLE RIVER DRAINAGE DISTRICT



750,000 Acres

550,000 Acres

620,000 Acres

CAPE GIRARDEAU

ADVANCE

INTERSTATE - 55

SIKESTON

HIGHWAY 60

DEXTER

NEW MADRID

MALDEN

HIGHWAY 52

KENNETT

HIGHWAY 412

CARUTHERSVILLE

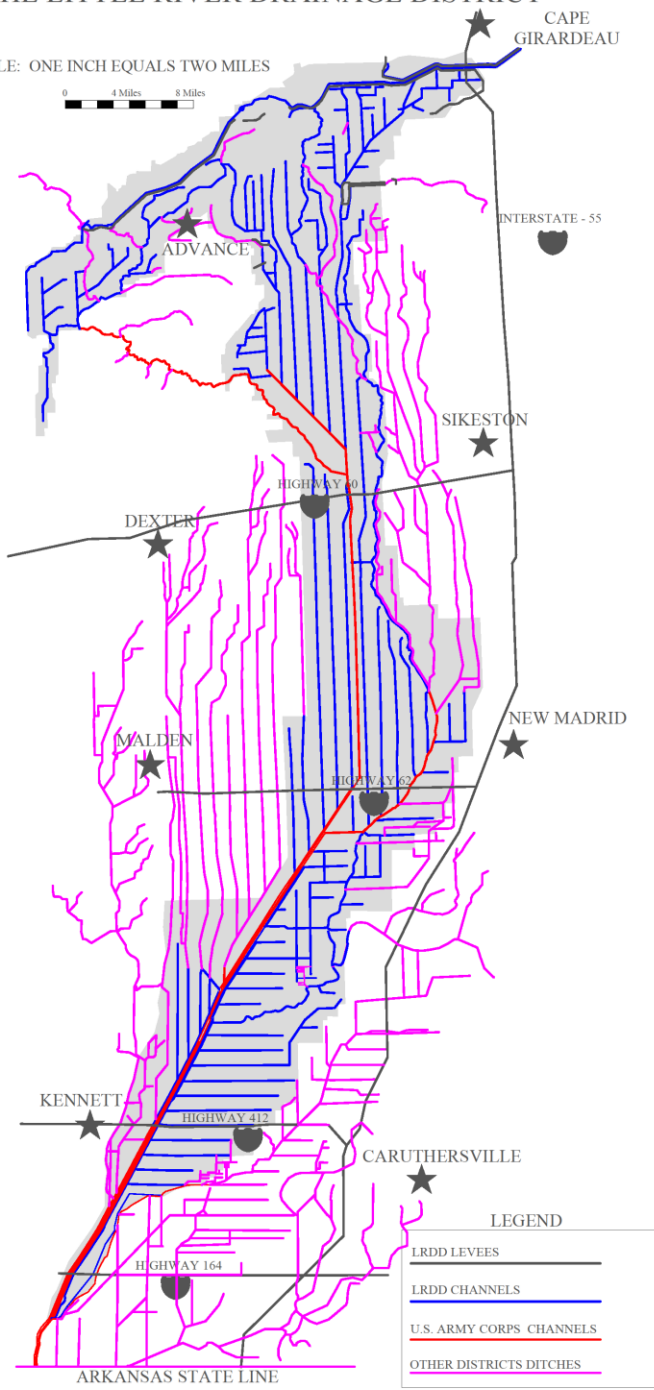
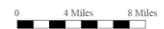
HIGHWAY 164

SCALE: ONE INCH EQUALS TWO MILES

ARKANSAS STATE LINE

THE LITTLE RIVER DRAINAGE DISTRICT

SCALE: ONE INCH EQUALS TWO MILES



LEGEND

- LRDD LEVEES
- LRDD CHANNELS
- U.S. ARMY CORPS CHANNELS
- OTHER DISTRICTS DITCHES



1927 Flood (Birth of Federal Investment)



1927 Flood (Birth of Federal Investment)



1927 Flood (Birth of Federal Investment)



**LRDD Headwater
Diversion Channel
Levee**

**Mississippi River
Flood of Record
2016**

Businesses and Property Protected



MR&T Levee Protection Near Delta, MO
Taken: 01/03/2016 (Flood of Record)
Crest Elevation: 16.9 ft. above natural ground
Crest Freeboard: 9 ft.

Businesses and Property Protected



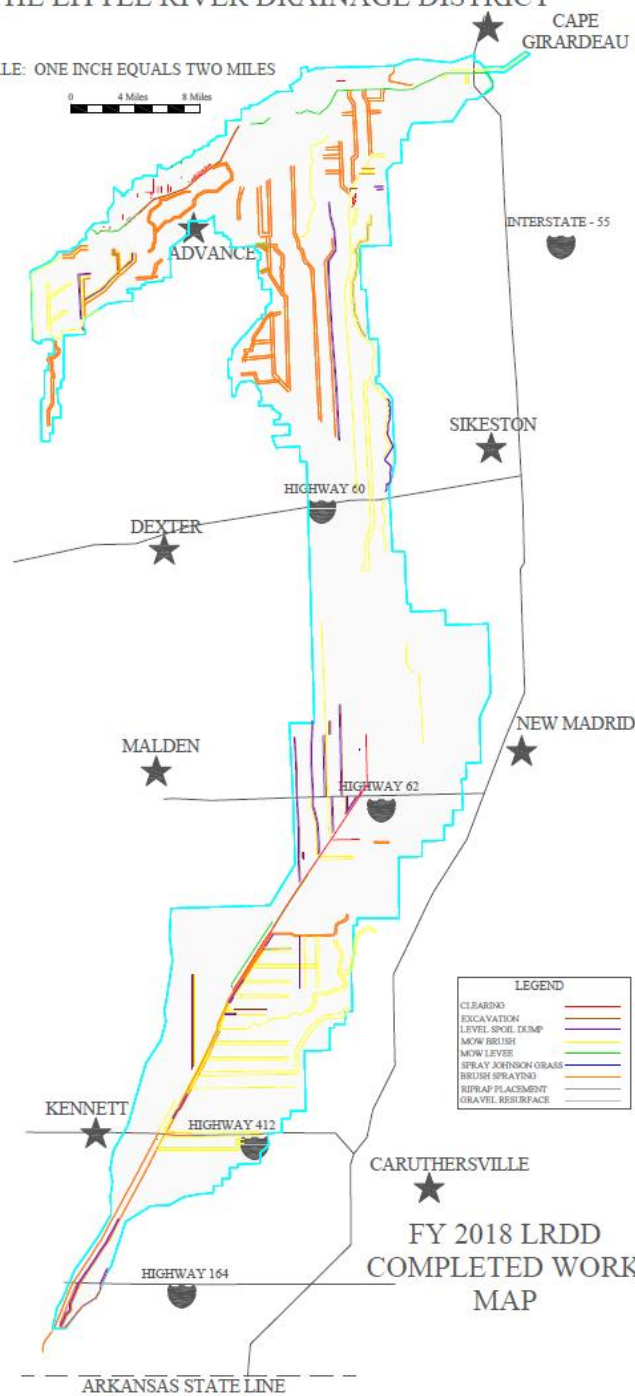
MR&T Levee Protection Near Cape Girardeau, MO
Taken: 01/05/2016 (Flood of Record)
Crest Elevation: 16.9 ft. above natural ground
Crest Freeboard: 9 ft.

Businesses and Property Protected



THE LITTLE RIVER DRAINAGE DISTRICT

SCALE: ONE INCH EQUALS TWO MILES



LEGEND	
CLEARING	Red line
EXCAVATION	Orange line
LEVEL SPOIL DUMP	Yellow line
MOW BRUSH	Light green line
MOW LEVEE	Green line
SPRAY JOHNSON GRASS	Dark green line
BRUSH SPRAYING	Blue line
RIPRAP PLACEMENT	Black line
GRAVEL RESURFACE	Grey line

FY 2018 LRDD
COMPLETED WORK
MAP

ARKANSAS STATE LINE

Native and Warm Season Grass



Native and Warm Season Grass



Native and Warm Season Grass

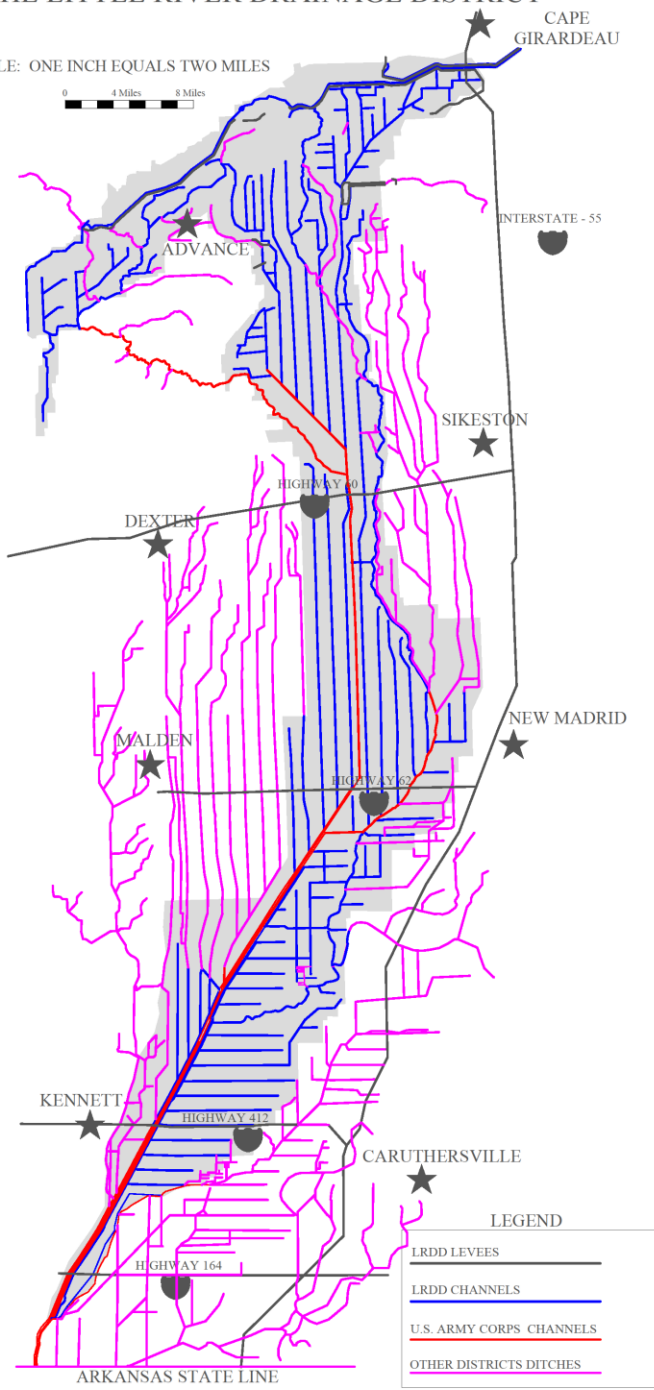
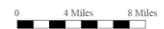


Native and Warm Season Grass



THE LITTLE RIVER DRAINAGE DISTRICT

SCALE: ONE INCH EQUALS TWO MILES



LEGEND

- LRDD LEVEES
- LRDD CHANNELS
- U.S. ARMY CORPS CHANNELS
- OTHER DISTRICTS DITCHES

QUESTIONS

COMMENTS

WWW.THELRDD.ORG



**FLOOD CONTROL & DRAINAGE
SINCE-1907**

