

# National Waterways Conference

## Snapshots from the Texas Coast: Where do we go from here?

October 27, 2022



**Alan R. Black, P.E.**  
**Deputy Director Engineering & Construction**

# Harris County Watersheds



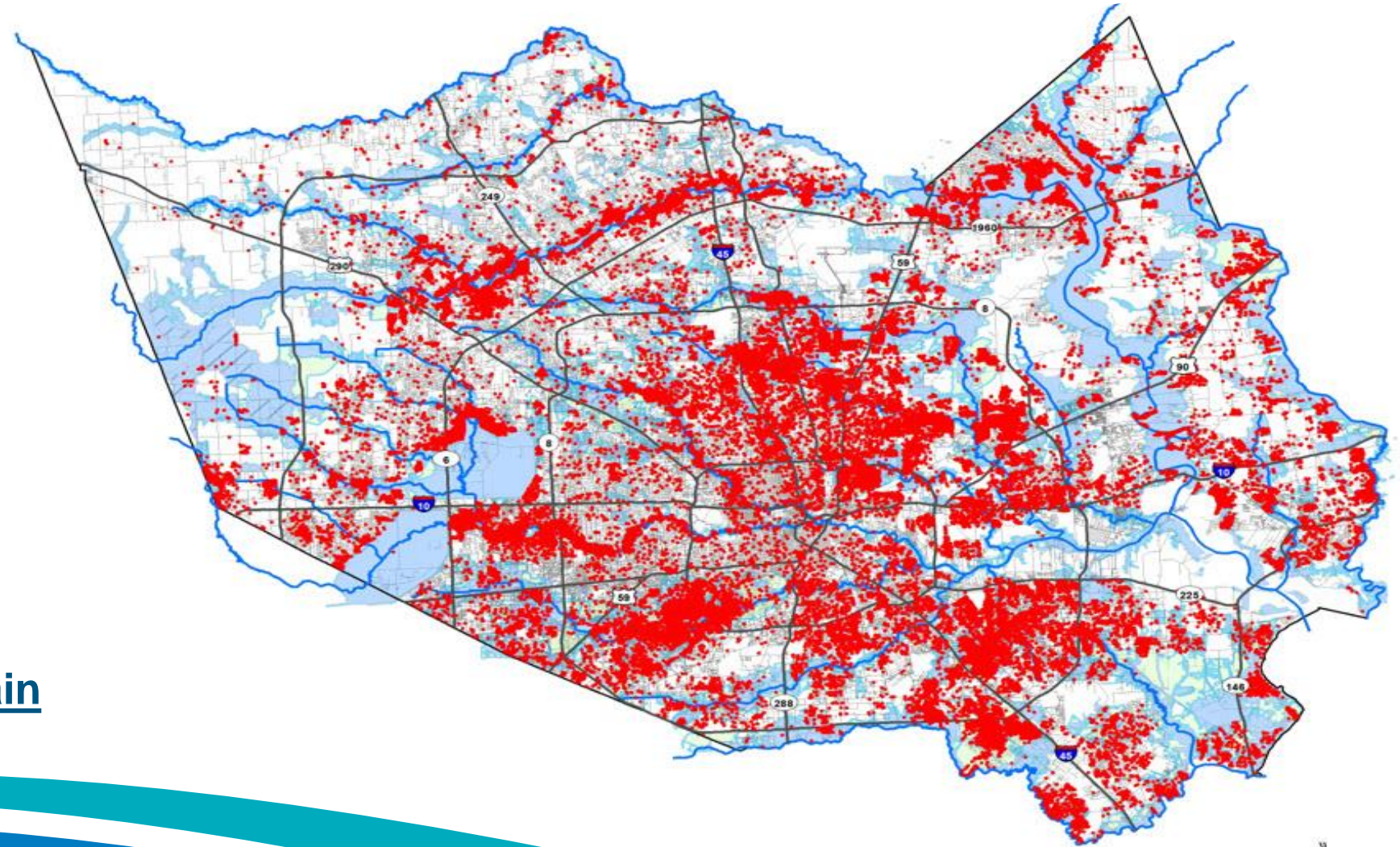
## What is a watershed?

A geographical region of land or "drainage area" that drains to a common channel or outlet, mostly creeks and bayous in Harris County. Drainage of the land can occur directly into a bayou or creek, or through a series of systems that may include storm sewers, roadside ditches, and/or tributary channels.



# Harvey House Flooding

<b>Harvey</b>	<b>154,170</b>
Allison	73,000
4-18-16	9,840
5-25-15	6,335
6-19-06	3,370



**11% total structures in Harris County flooded**

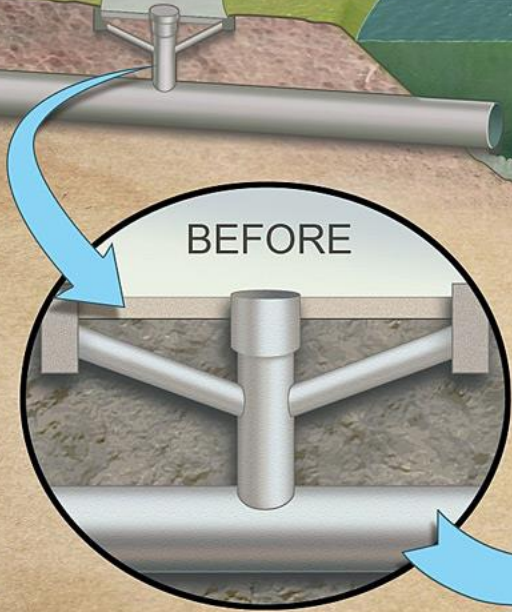
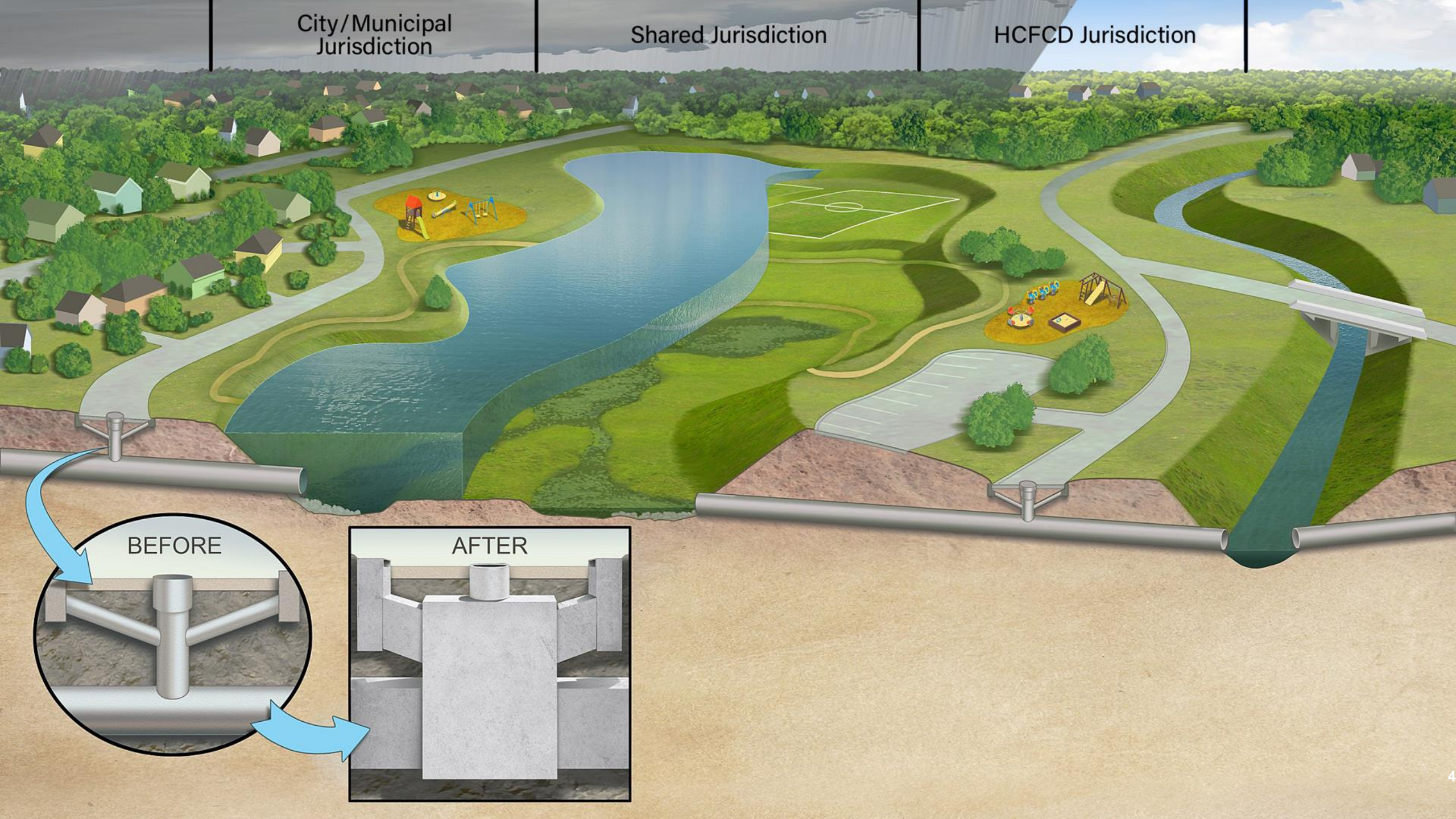
**68% outside 1% floodplain**



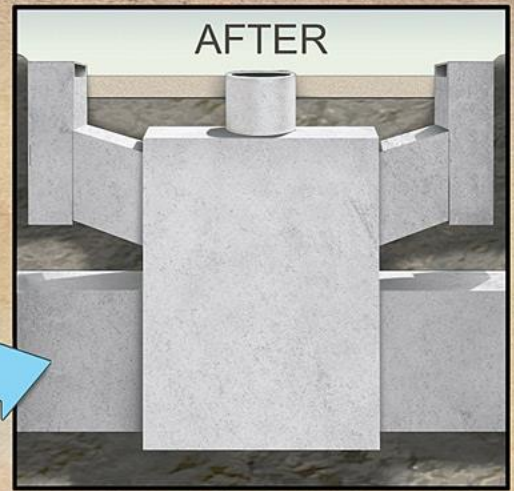
City/Municipal  
Jurisdiction

Shared Jurisdiction

HCFCJ Jurisdiction

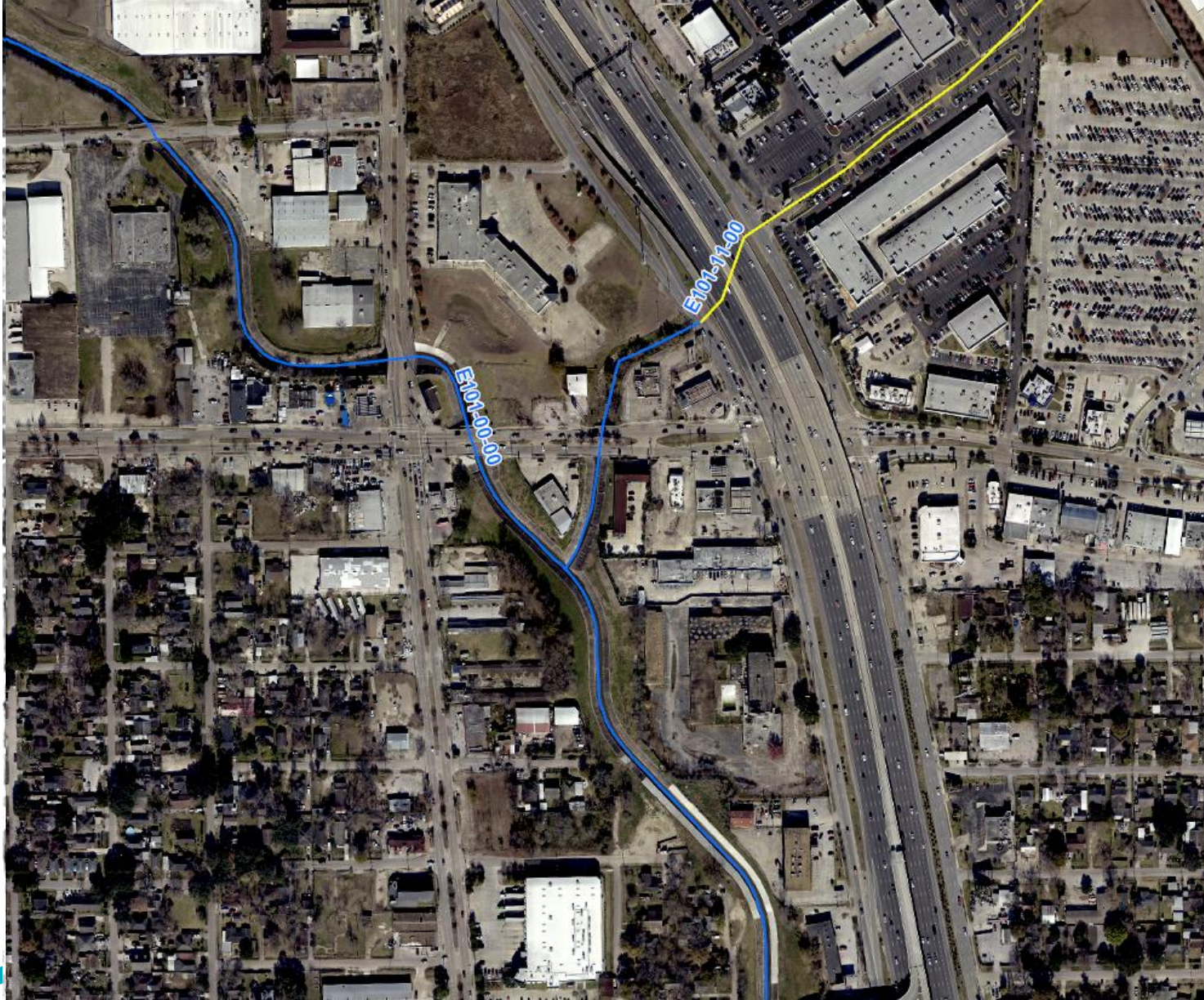


BEFORE



AFTER



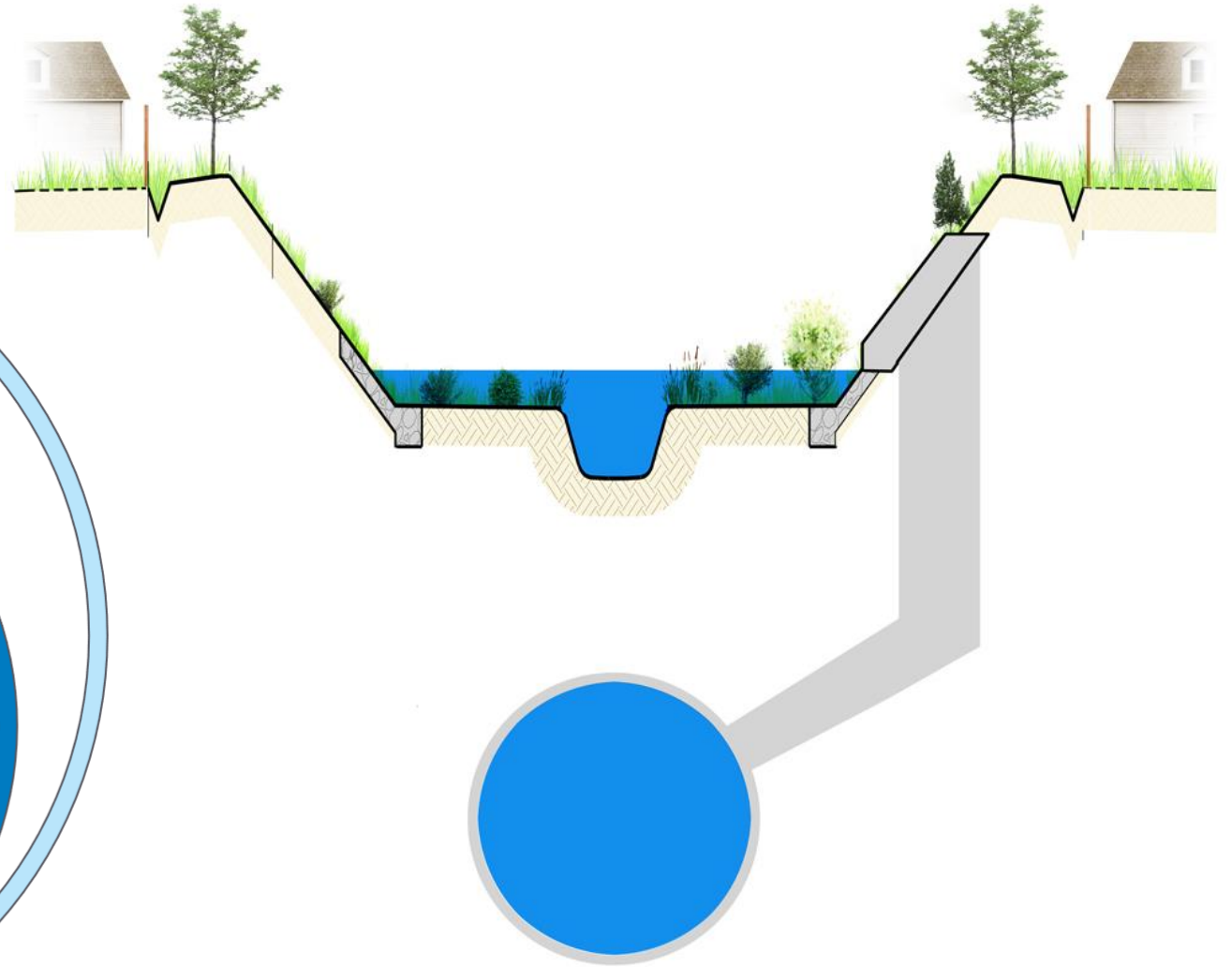
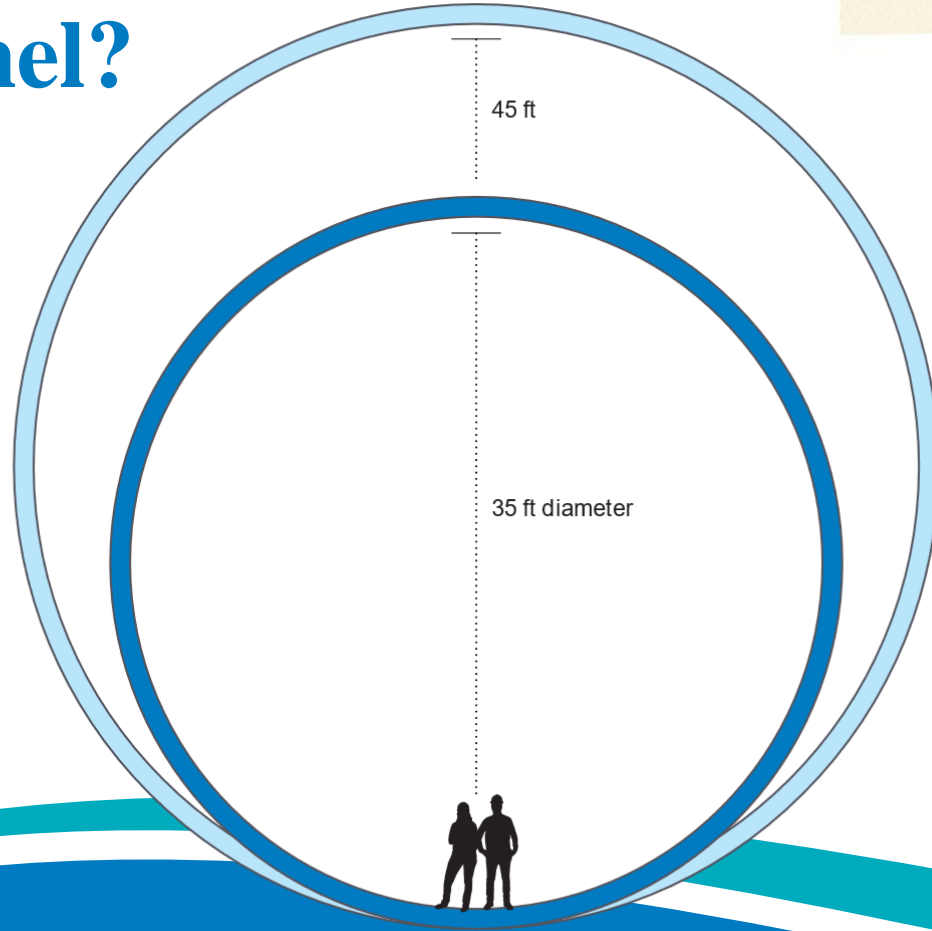


# Population Density

Development makes it more challenging to construct traditional options like channels and basins

- 1930
- 1953
- 2021

# How Different is a Stormwater Tunnel?





City/Municipal  
Jurisdiction

Shared Jurisdiction

HCFCJ Jurisdiction





# How is



# FLOOD CONTROL DISTRICT

funded for disaster recovery & resiliency?

